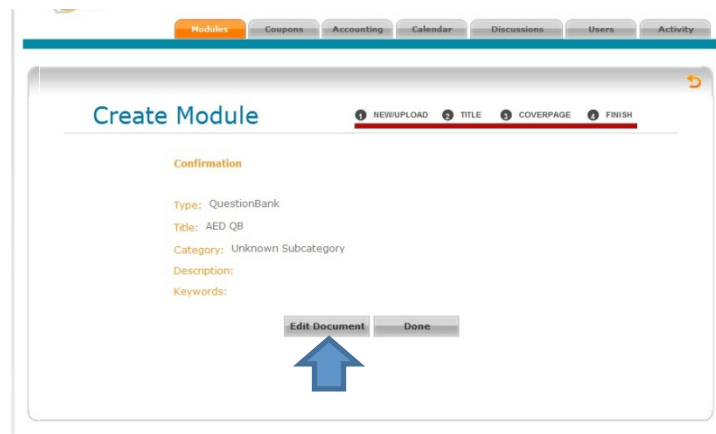
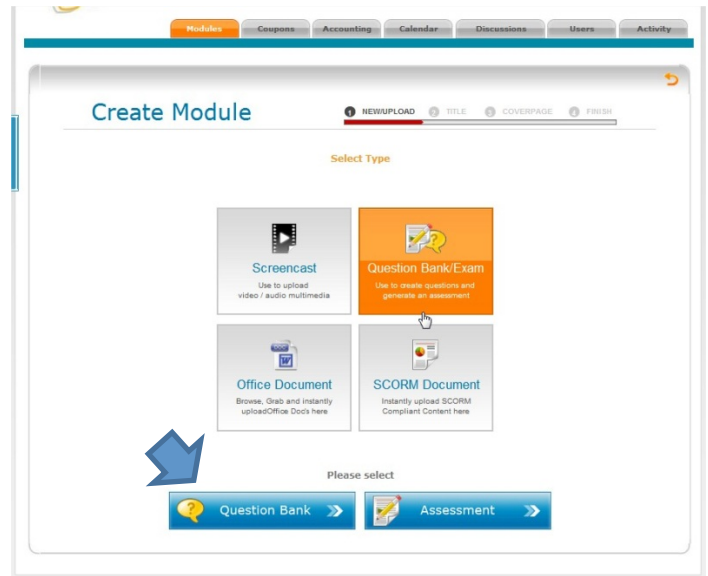
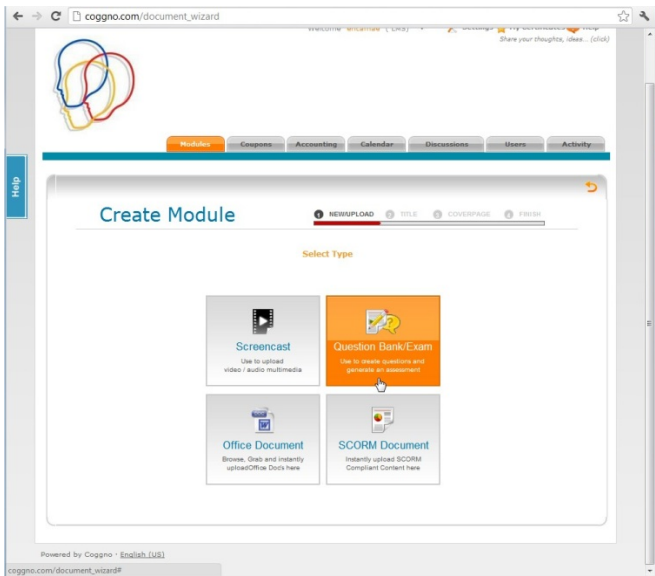
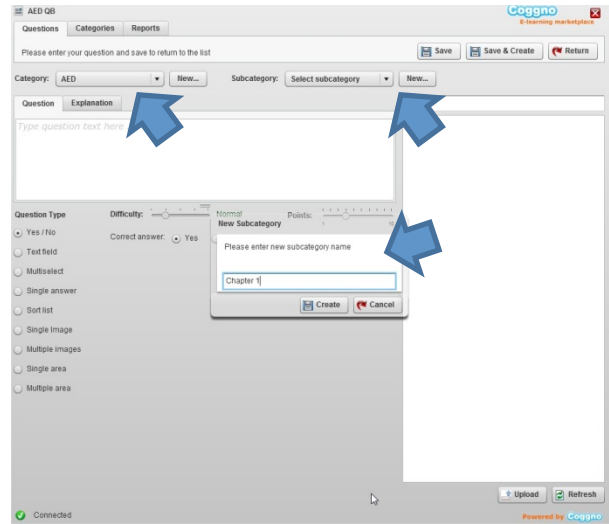
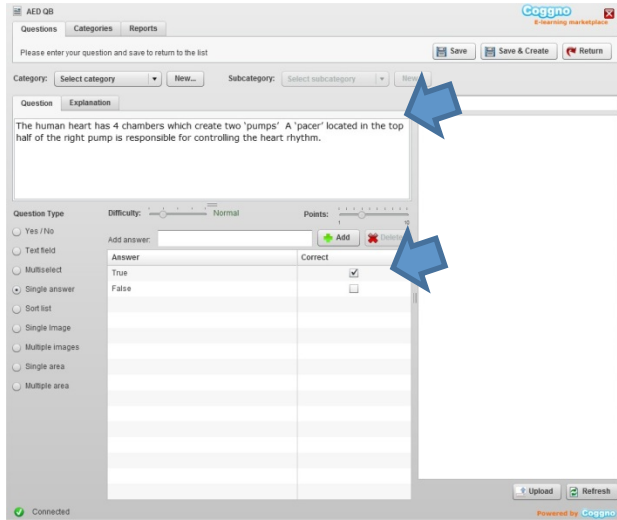


Step 1: Question Bank (add in your questions and answers to your Question Bank)

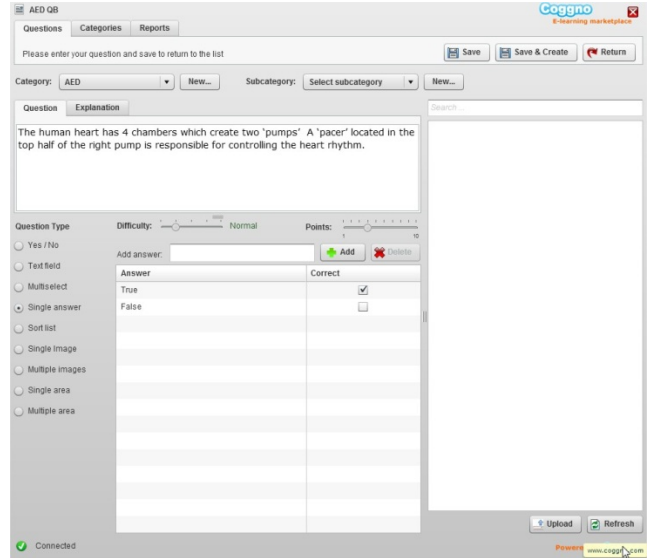
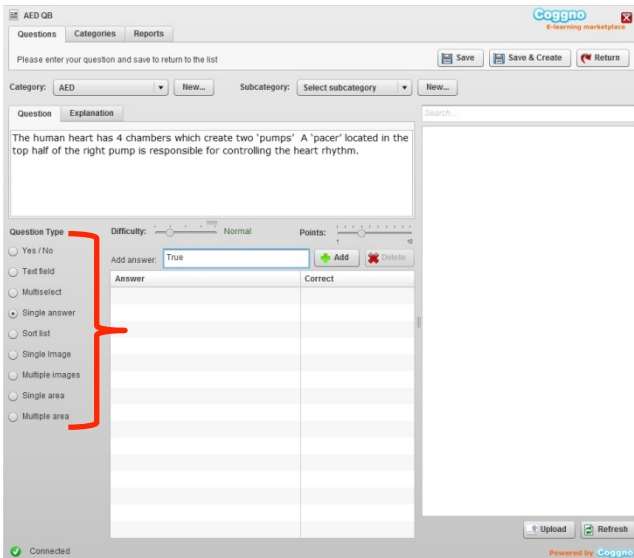
- Question Bank is where you store all your questions for your different training, which you can just pull up when you create Assessment (test/quiz)



- Copy the questions on to the QB with their corresponding answers
- Create Category and Sub-Category which

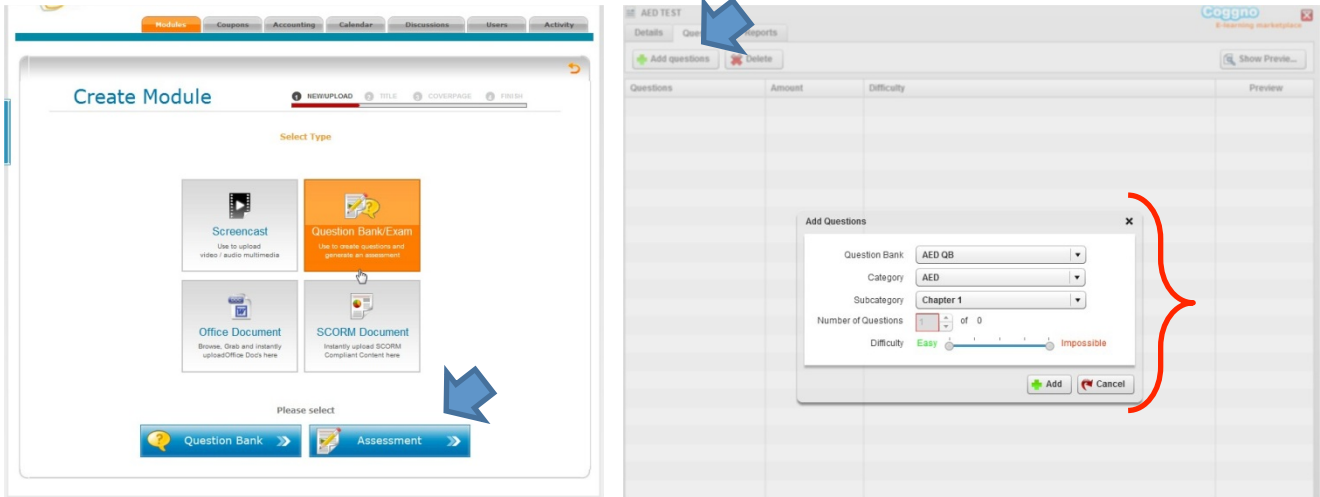


- You can choose different type of questions: Yes/No, Multiple Choice, etc



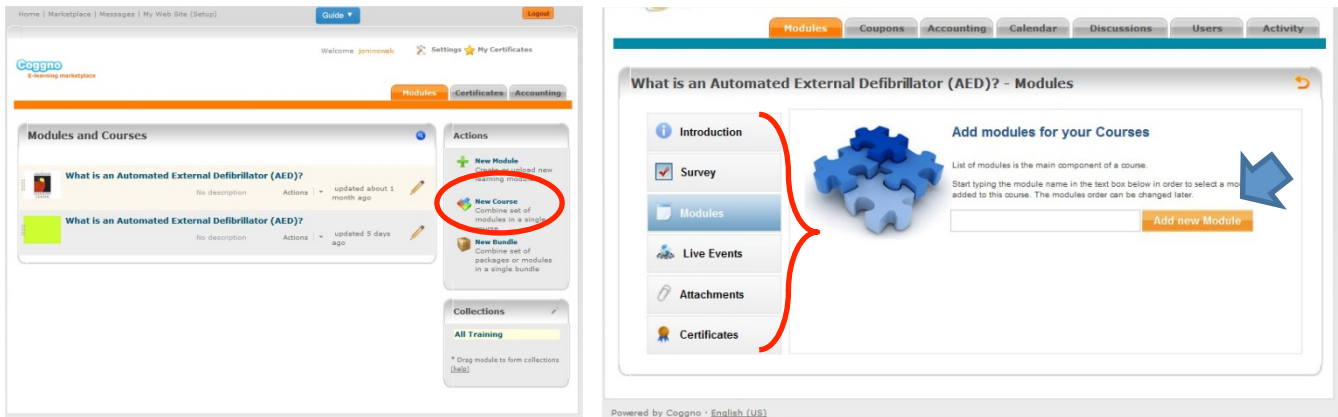
Step 2: Assessment (create your Assessment module)

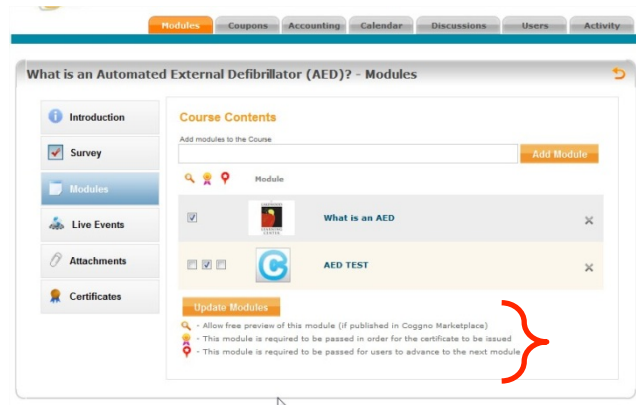
- Create Assessment for the actual test/quiz
- Choose Add Question, then choose the Category and Sub-Category to pull up the questions and answers



Create a Course

- To add your training and assessment/test in one “course”, create course and add your module and test
- You can write Introduction, Survey, add attachments as supplemental literature for student
- Most importantly, you can create Certificates, which generates and issued to students who finish your course





Learners Perspective

